



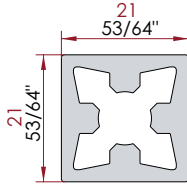
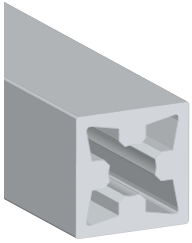
°eCubed Shelving Technical Manual



Components 3
Finish Options 3
Assembly 4
Glass Shelf Options 5
Weight Capacity & Dimensions 6
Wall Mount Installation 7
Shelf Size Calculation 8
Ladder Configurations 9
Standard Configurations 11
Cleaning and Care..... 31
Warranty

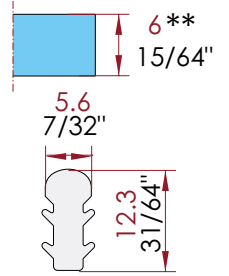
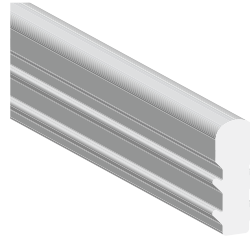


7711 - Vertical

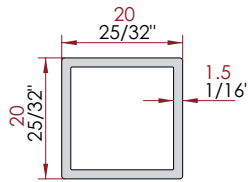
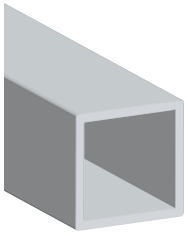


Shelf Gasket

For 6mm (1/4") Glass

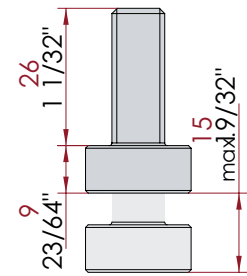
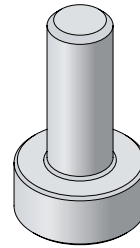


7712 - Tube



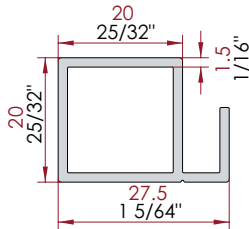
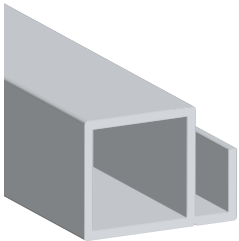
Aluminum Leveler

Silver Finish



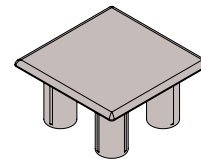
Thread Diameter:
M10 - 1.1875" (30mm)

7713 - Shelf



End Cap

Grey or Black Plastic



Profile Finishes

Anodized

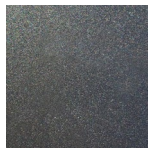


natural clear (N)

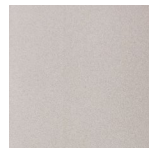


stainless nickel (S)

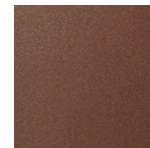
Coated



graphite (GR)



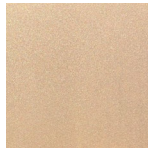
arctic silver (AS)



luxe bronze (LB)



chalk (CK)



gold (GLD)



copper (C)



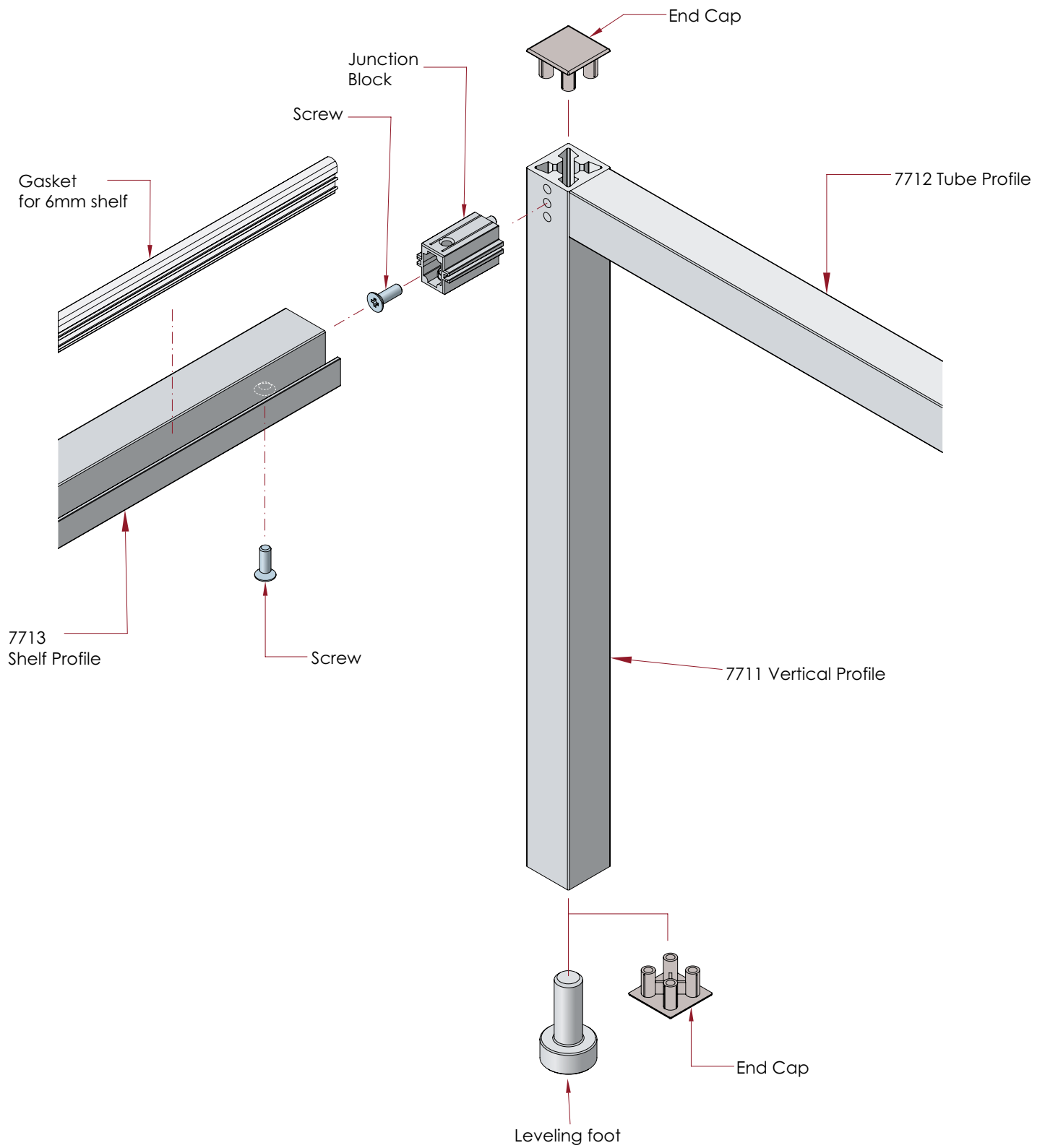
modern brass (MB)



onyx (X)



bronze matte (BZM)



If used with leveling foot, thread M10 - 1.1875" (30mm) depth at the bottom edge



Backpainted Glass

- Glass shelves recommended in 6mm thickness
- Gloss & Matte Glass available
- High quality water based paint on low iron glass
- All glass is tempered safety glass without a tempered logo
- All backpainted glass has a light grey backer for added durability



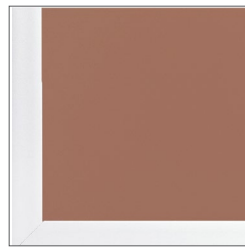
white
matte



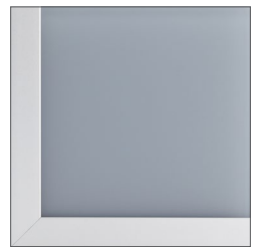
sand
matte



amarillo
matte



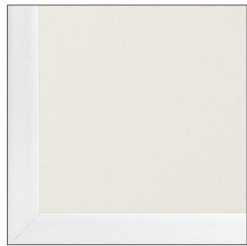
sienna
matte



slate
matte



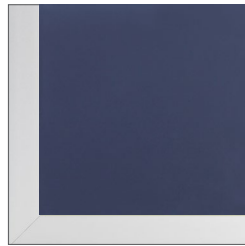
black
matte



cream
matte



oasis
matte



navy
matte

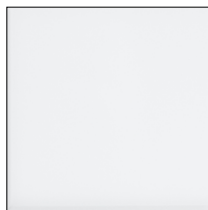


mineral
matte

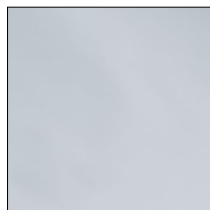
6mm Standard Glass Shelves



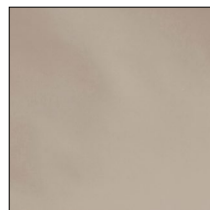
low-iron
clear



low-iron
satin



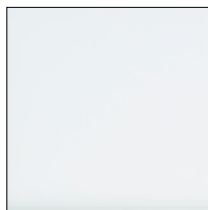
grey
clear (smoked)



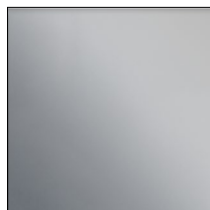
bronze
clear



clear



satin



grey satin



bronze satin



- Max overall dimension = 72" (contact Element Designs for any custom configuration exceeding this limit)
- Min overall dimension = 6"
- Max length between vertical attachment parts = 48"

Weight Capacity:

- 2 wall attachment points: Maximum capacity of 100lbs (50 kg), evenly distributed
- 3 wall attachment points: Maximum capacity of 165lbs (75 kg), evenly distributed
- 4 wall attachment points: Maximum capacity of 220lbs (100 kg), evenly distributed

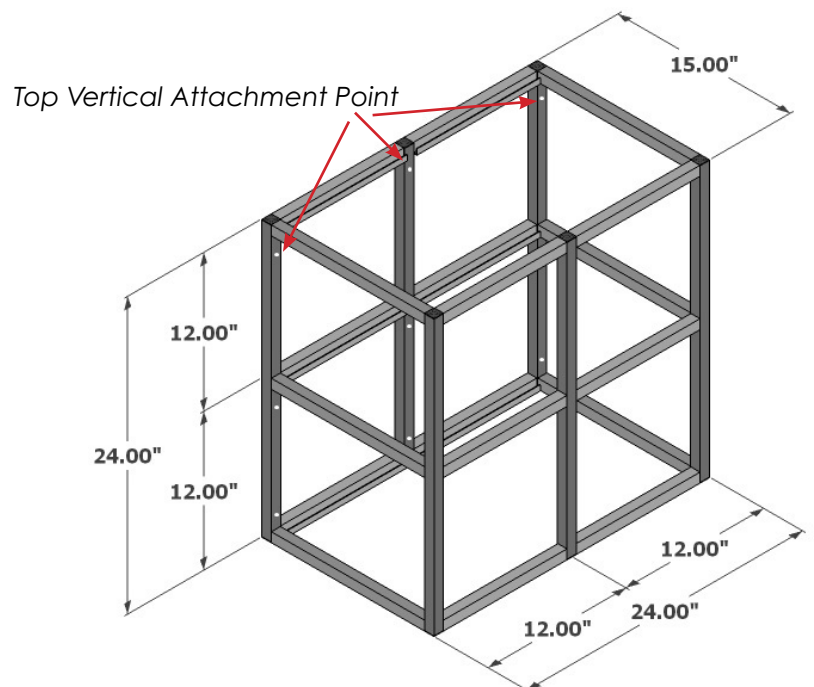
- Depth from 350 to 375 mm => reduced capacity of 10%
- Depth from 376 to 400 mm => reduced capacity of 20%
- Depth from 401 to 425 mm => reduced capacity of 30%

Example:

For an eCube which has 42" (1067mm)W x 18" (457mm) H x 15.5" (390mm)D with three top vertical stile attachment points, weight capacity would be calculated as 165lbs reduced 20% due to the cube depth between 376 - 400mm. The total maximum load of this configuration would be 132lbs – assuming evenly distributed load.

This weight capacity example is based on the top load bearing anchor point per vertical stile only. Element Designs will bore an anchor hole at each vertical stile connection which is mandatory for hanging the eCube in a wall application. The balance of each anchor point may contribute to additional load bearing although this is not considered in the load bearing calculation.

Permanent installation and securely mounting is the sole responsibility of the installer. Element Designs assumes no risk or liability for the eCubed shelving system once delivered to the installation site.





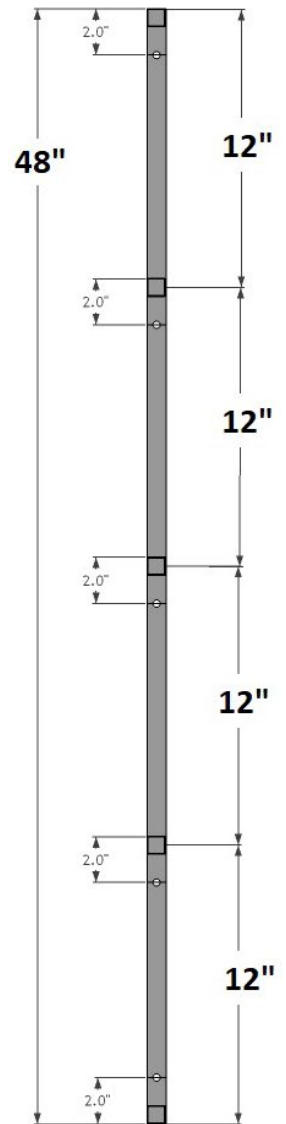
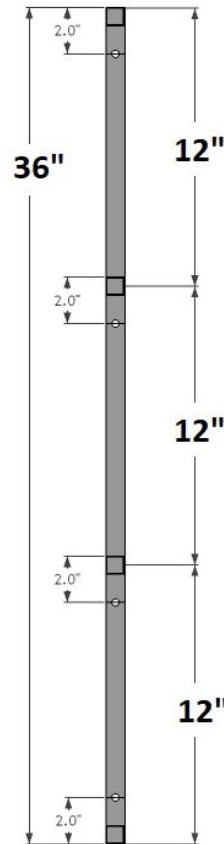
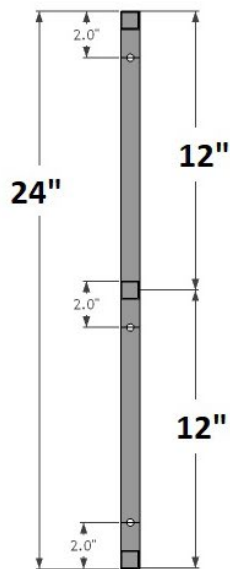
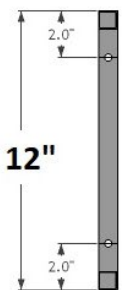
Front wall hole diameter = 8mm; Back wall hole diameter = 3mm

Plastic cover caps provided for front wall hole.

Use proper pan head screw anchor for substrate.

Screw length to be determined by wall substrate.

Anchor into studs if possible.



The proper installation of the eCubed system is the full responsibility of the installer and Element Designs assumes no responsibility or liability for the permanence of the installation. Standard construction mounting practices should be followed by the installer.



Use formula below to size a shelf to fit into an eCube:

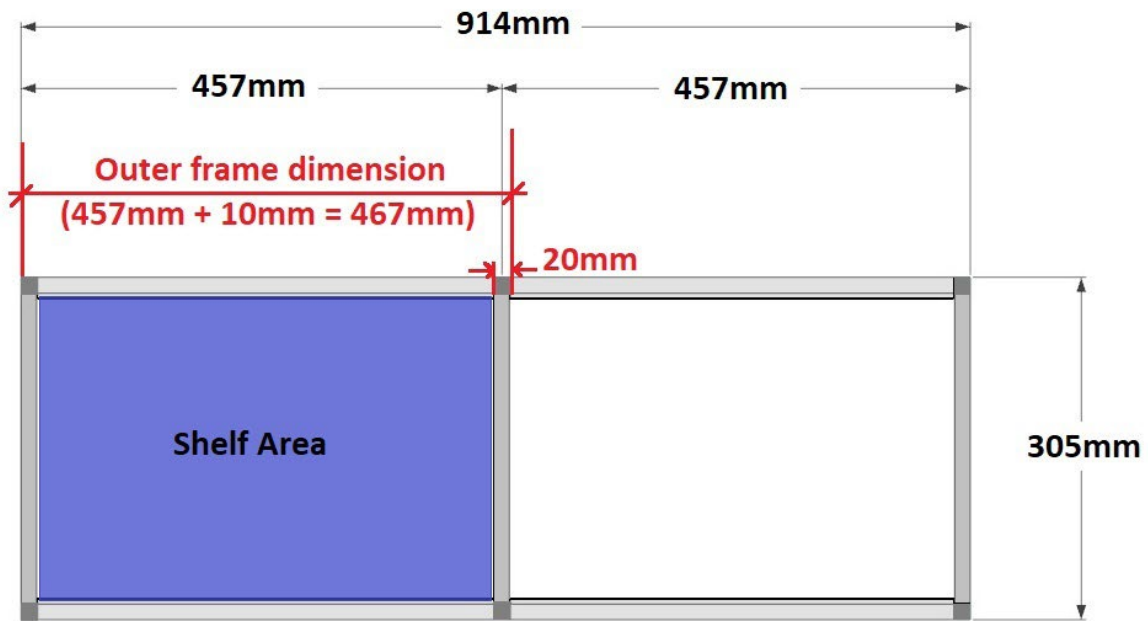
Shelf dimension = Outer frame dimensions of shelf area - 43mm

Consider each frame tubing 20mm.

Example:

For an eCube with 914mm (36") overall width and one center divider, the **outer frame dimension** is 467mm.

eCube TOP VIEW

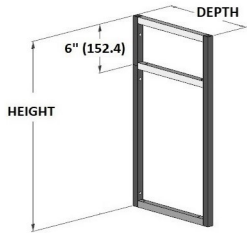


Shelf width = 467mm - 43mm = 424mm

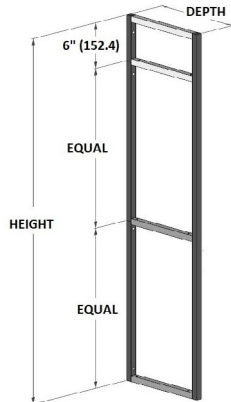
**Shelf depth =
305mm - 43mm = 262mm**



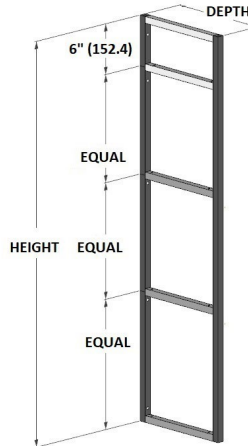
Examples:



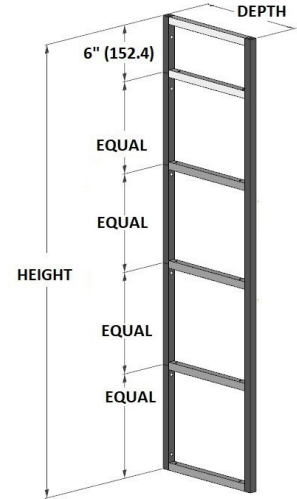
2 Shelves



3 Shelves



4 Shelves



5 Shelves

Note, top most depth piece not intended to hold shelf. First shelf will be standard 6" from top, but all dimensions are fully customizable.

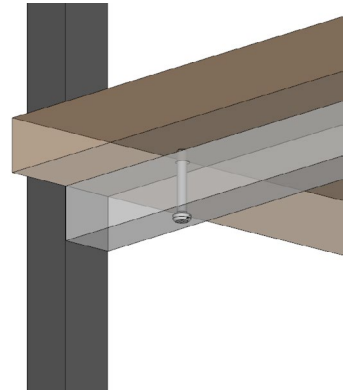
Max number of shelves = 8. Please contact Element Designs for custom configurations.

Select option to include holes in depths to secure wood shelves (not necessary if using glass shelves).

Glass shelves for eCube Ladders can be 6mm or 10mm thickness.

Max recommended support span for 6mm glass = 32"

Max recommended support span for 10mm glass = 42"



The permissible load for glass depends on multiple factors such as the thickness of the glass, square footage of the glass, as well as the distance between shelf brackets or support systems.

Shorter distances between shelf brackets not only allows more weight for the shelf to support, but thinner glass can bear the same weight on shorter shelf brackets. The longer the shelf and more distance between support brackets reduces the weight load a shelf can support. Choose thicker glass for longer span between supports, as it can support more weight.



To insure proper cleaning and care of your product, please follow these simple suggestions for our materials:

Glass (gloss or satin surfaces)

We recommend using 99% isopropyl alcohol, citrus or vinegar based cleaners on a clean, non-abrasive cloth or paper towel. If a heavy stain is present and does not come clean using the suggestions above, use isopropyl alcohol with a Magic Eraser by gently scrubbing until the mark is removed.

Backpainted Glass

Follow instructions above for the gloss and/or satin surface of the glass, opposite the painted side. For the backpainted water based coating, we recommend using a mildly damp (water only) on a non-abrasive cloth to gently clean the coated side of the glass.

Aluminum Extrusions

Use a clean cloth with a mild detergent to clean the aluminum.

NEVER use an abrasive cleaning pads such as a metallic sponge, solvents, strong detergents or other chemical agents when cleaning glass or aluminum.



Element Designs' °eCubed Shelving products are covered by a limited liability warranty from defects in material and workmanship over the functional lifetime of the system. The warranty includes any defects in the fabricated size, boring locations, aluminum framing flaws outside of quality standards, and glass imperfections outside of quality standards. Element Designs also warrants its products from deterioration, discoloring, degrading, or overall changing through the course of the product's lifetime. This warranty does not apply if, in the judgment of Element Designs, the product fails due to damage from shipment, handling, installation, storage, accident, abuse or misuse, or if it has been used or maintained in a manner not conforming to product's care instructions, has been modified in any way, or has been defaced. Repair by anyone other than Element Designs or an approved agent voids this warranty. The maximum liability of Element Designs is the product purchase price.

The proper installation of the °eCubed system is the full responsibility of the installer and Element Designs assumes no responsibility or liability for the permanence of the installation. Standard construction mounting practices should be followed by the installer.